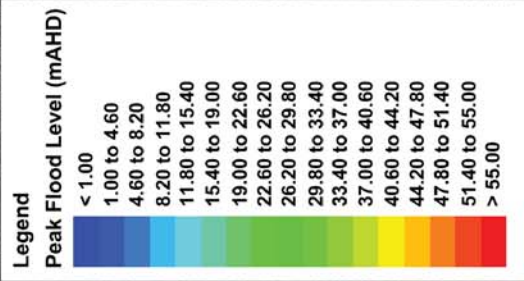
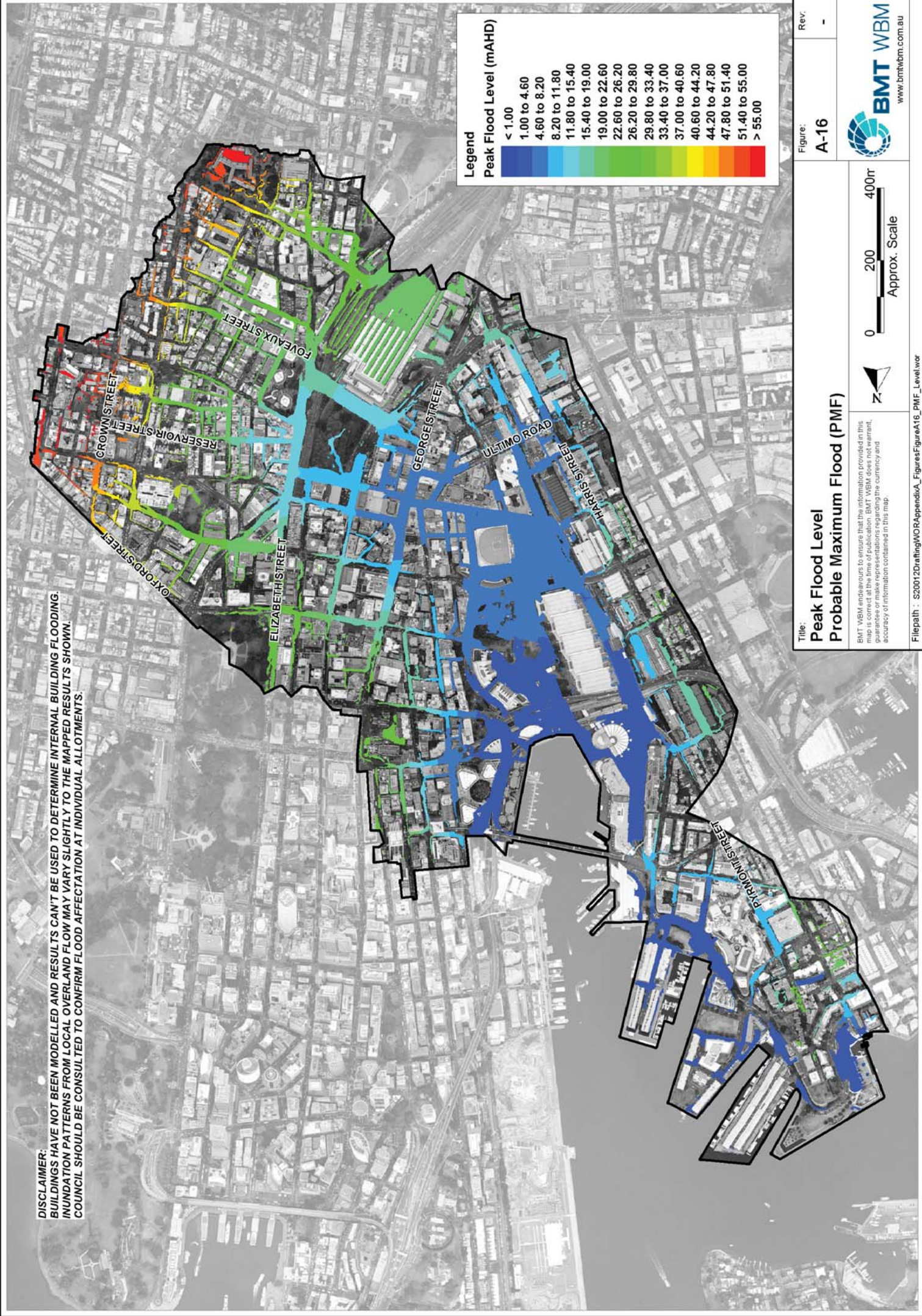


DISCLAIMER:
 BUILDINGS HAVE NOT BEEN MODELLED AND RESULTS CAN'T BE USED TO DETERMINE INTERNAL BUILDING FLOODING.
 INUNDATION PATTERNS FROM LOCAL OVERLAND FLOW MAY VARY SLIGHTLY TO THE MAPPED RESULTS SHOWN.
 COUNCIL SHOULD BE CONSULTED TO CONFIRM FLOOD AFFECTATION AT INDIVIDUAL ALLOTMENTS.



Title: Peak Flood Level Probable Maximum Flood (PMF)

Figure: A-16

Rev.: -

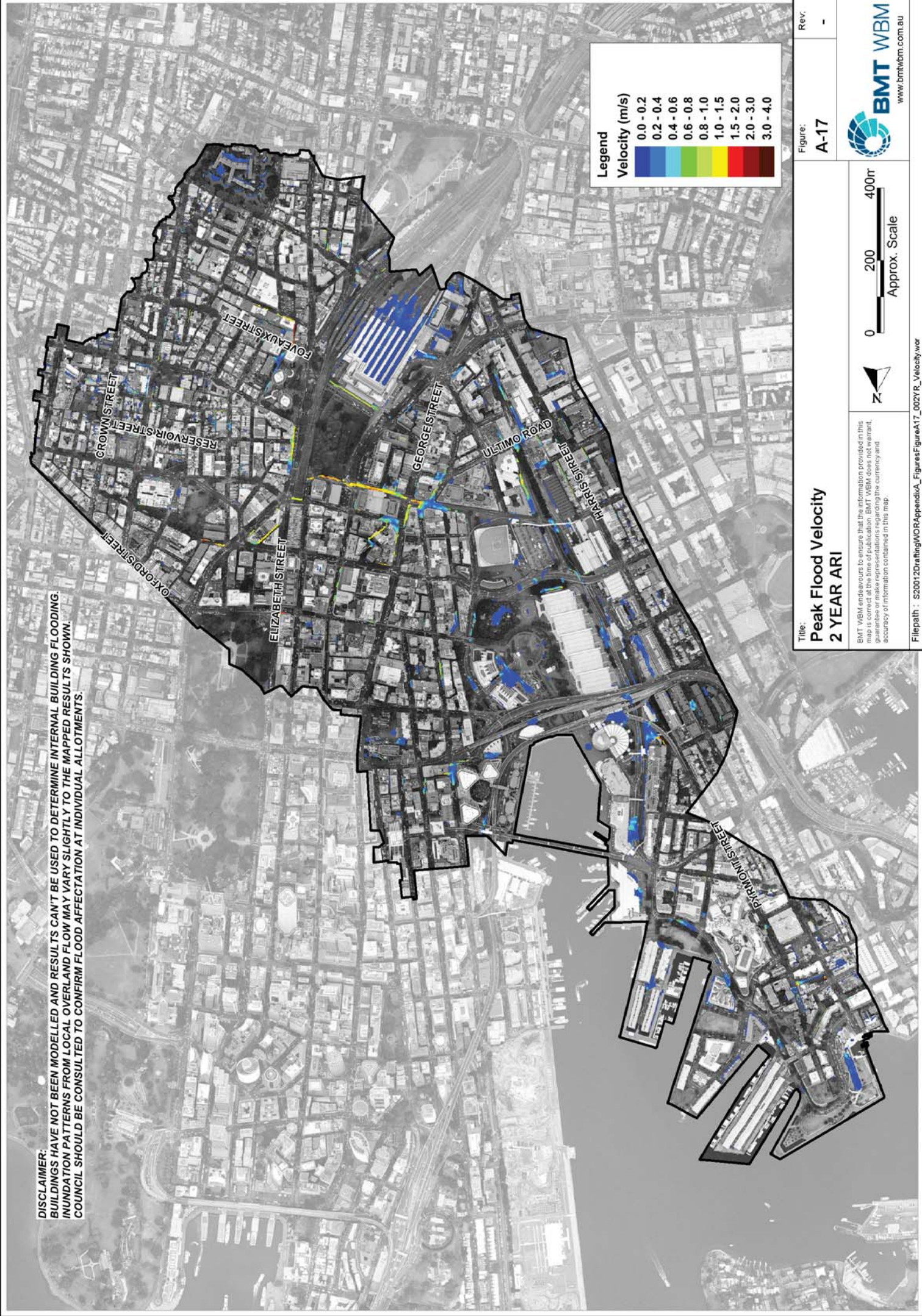
Scale: 0 200 400m
Approx. Scale

Disclaimer: BMT WBM endeavours to ensure that the information provided in this map is accurate and up to date. BMT WBM does not warrant, represent or accept any liability for the currency and accuracy of information contained in this map.

Filepath: S20012Draing\WOR\AppendixA_Figures\FigureA16_PMF_Level.wor

BMT WBM
www.bmtwbm.com.au

DISCLAIMER:
 BUILDINGS HAVE NOT BEEN MODELLED AND RESULTS CAN'T BE USED TO DETERMINE INTERNAL BUILDING FLOODING.
 INUNDATION PATTERNS FROM LOCAL OVERLAND FLOW MAY VARY SLIGHTLY TO THE MAPPED RESULTS SHOWN.
 COUNCIL SHOULD BE CONSULTED TO CONFIRM FLOOD AFFECTATION AT INDIVIDUAL ALLOTMENTS.



Title: Peak Flood Velocity
2 YEAR ARI

Figure: A-17

Rev.: -

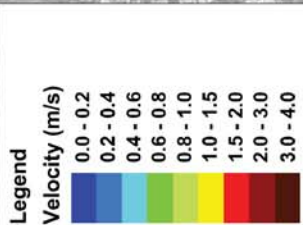
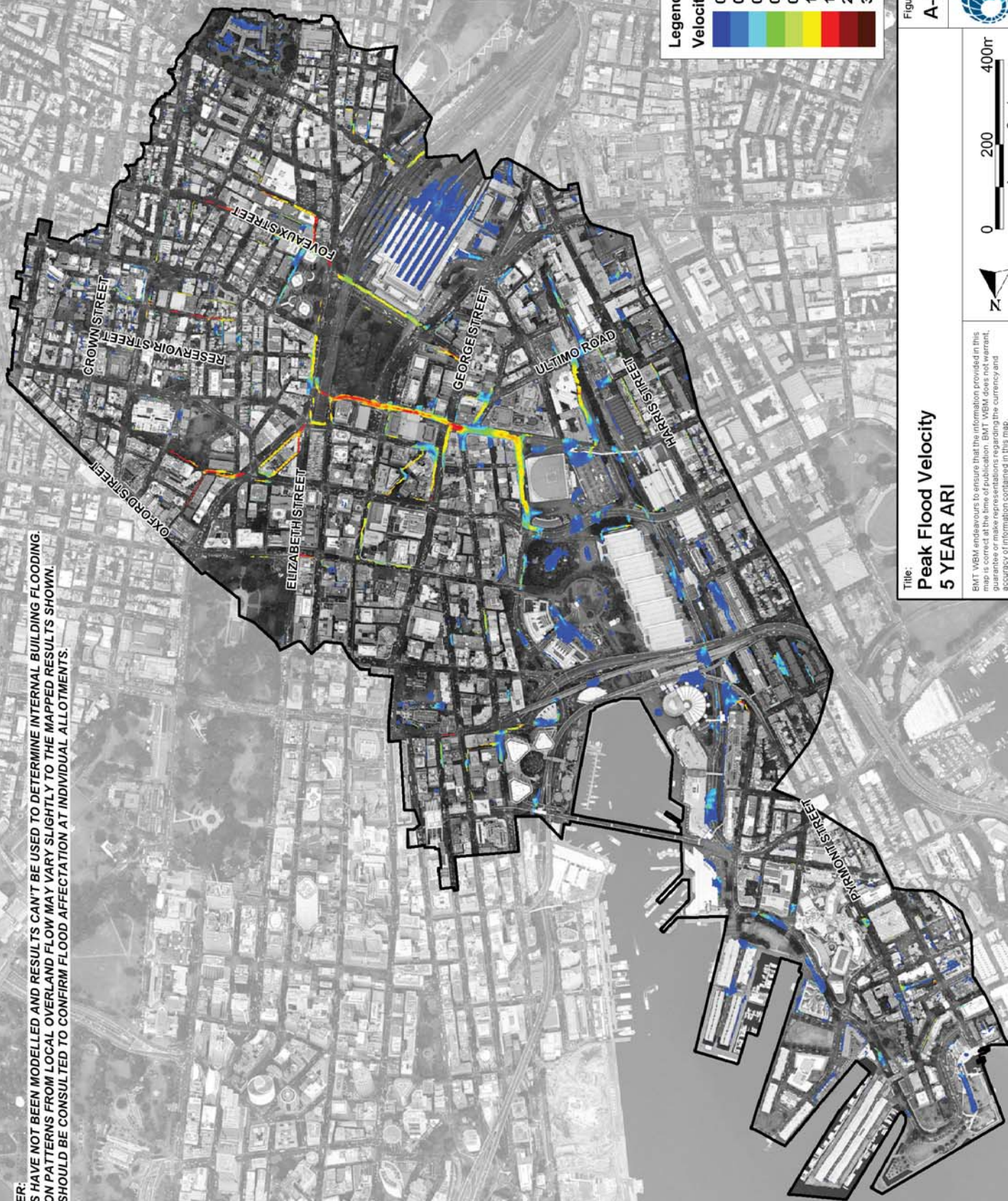
Scale: 0 200 400m
 Approx. Scale

Disclaimer: BMT WBM endeavours to ensure that the information provided in this map is accurate. However, BMT WBM does not warrant, represent or accept any liability for the currency and accuracy of information contained in this map.

Filepath: S:\20012\Drain\NOR\AppendixA_Figures\FigureA17_002YR_Velocity.wor

BMT WBM
 www.bmtwbm.com.au

DISCLAIMER:
 BUILDINGS HAVE NOT BEEN MODELLED AND RESULTS CAN'T BE USED TO DETERMINE INTERNAL BUILDING FLOODING.
 INUNDATION PATTERNS FROM LOCAL OVERLAND FLOW MAY VARY SLIGHTLY TO THE MAPPED RESULTS SHOWN.
 COUNCIL SHOULD BE CONSULTED TO CONFIRM FLOOD AFFECTATION AT INDIVIDUAL ALLOTMENTS.



Title: Peak Flood Velocity
5 YEAR ARI

Figure: A-18

Rev.: -

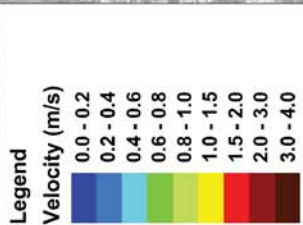
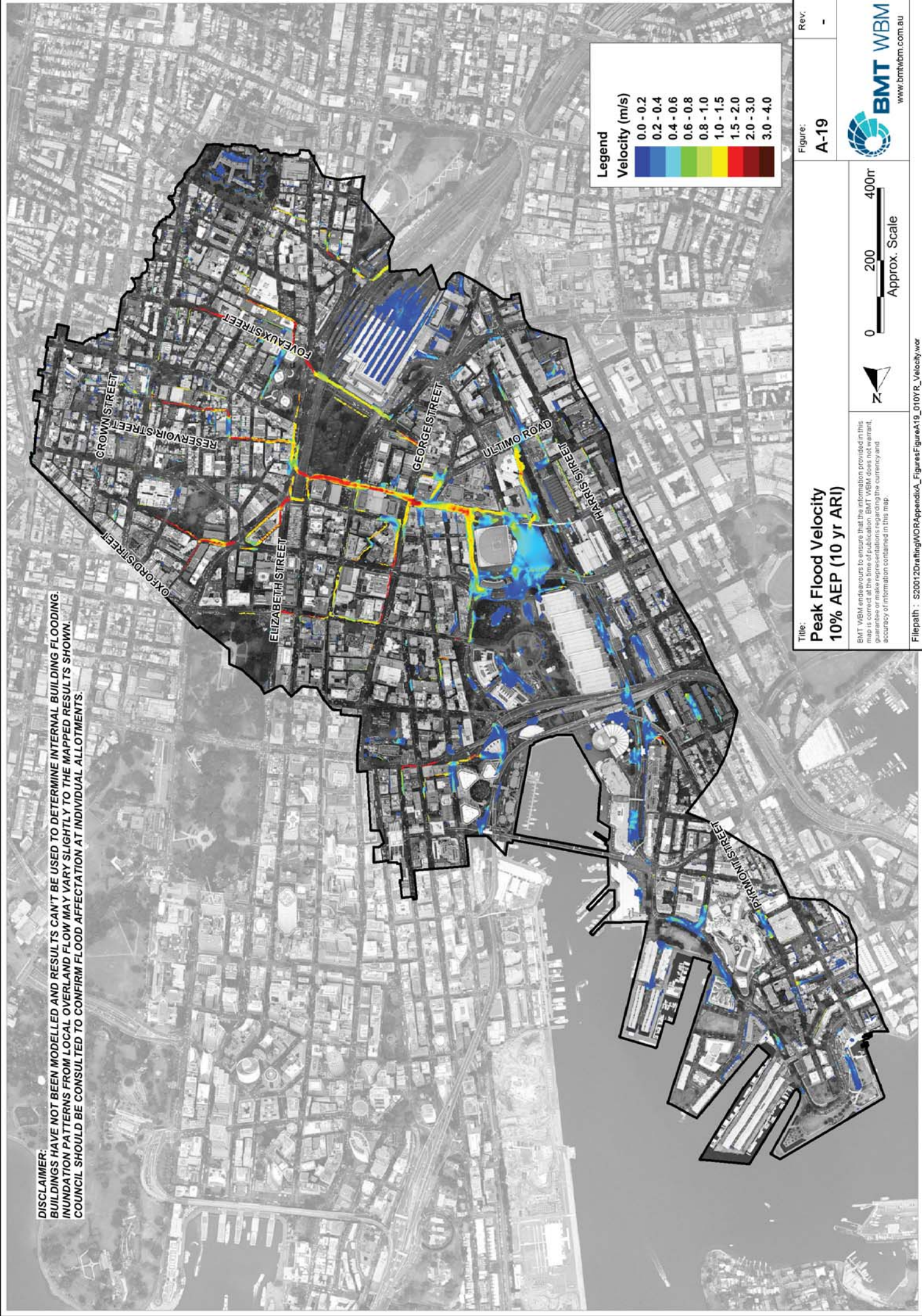
Scale: 0 200 400m
 Approx. Scale

Disclaimer: BMT WBM endeavours to ensure that the information provided in this map is accurate and up to date. BMT WBM does not warrant, represent or make any other statements regarding the currency and accuracy of information contained in this map.

Filepath: S20012DraIn(NOR)AppendixA_Figures\FigureA18_005YR_Velocity.wor

BMT WBM
 www.bmtwbm.com.au

DISCLAIMER:
 BUILDINGS HAVE NOT BEEN MODELLED AND RESULTS CAN'T BE USED TO DETERMINE INTERNAL BUILDING FLOODING.
 INUNDATION PATTERNS FROM LOCAL OVERLAND FLOW MAY VARY SLIGHTLY TO THE MAPPED RESULTS SHOWN.
 COUNCIL SHOULD BE CONSULTED TO CONFIRM FLOOD AFFECTATION AT INDIVIDUAL ALLOTMENTS.



Title: Peak Flood Velocity
10% AEP (10 yr ARI)

Figure: A-19

Rev.: -

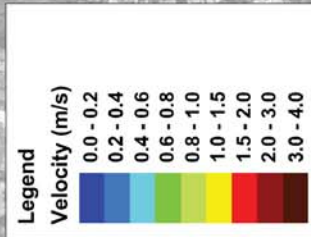
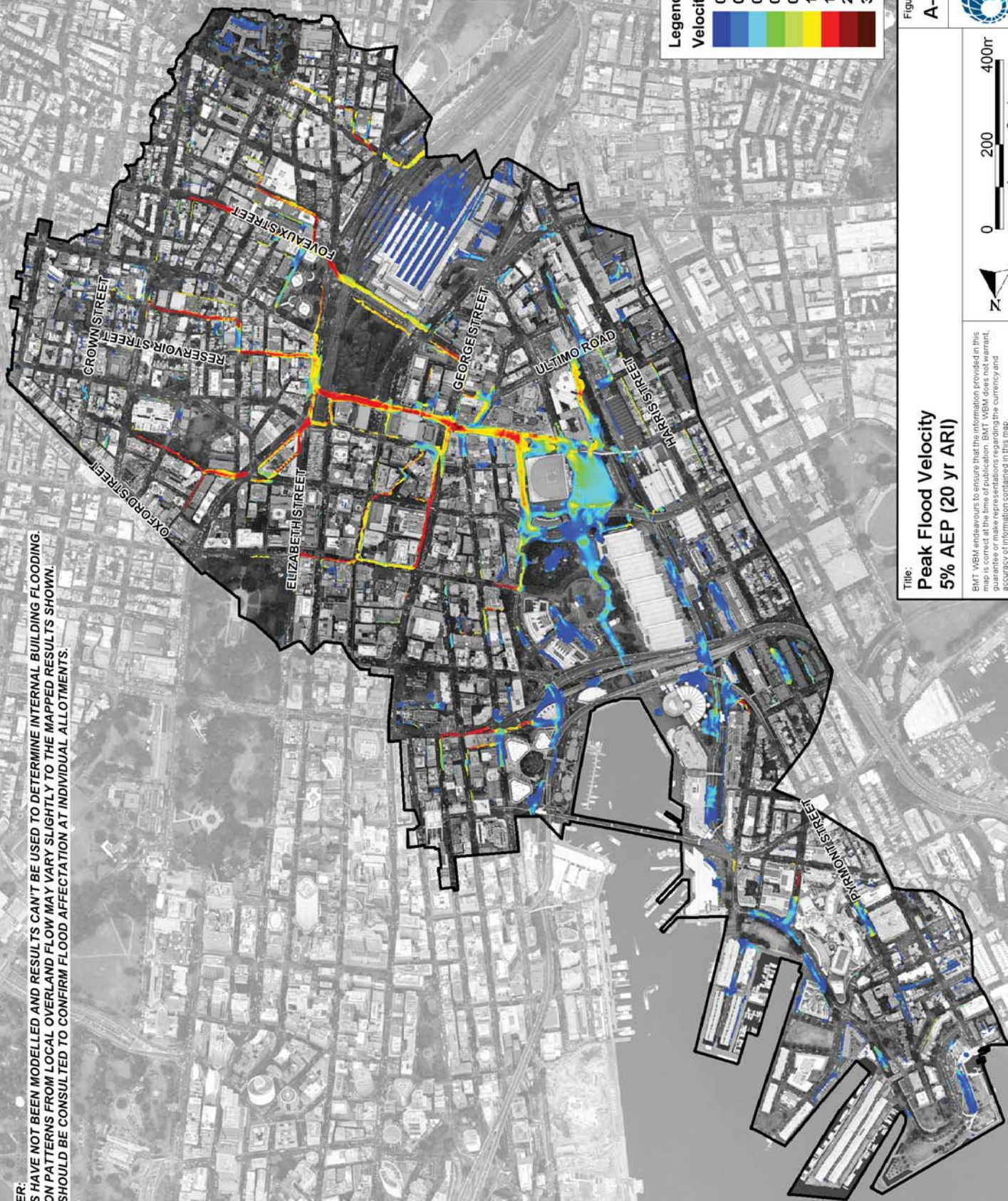
Scale: 0 200 400m
 Approx. Scale

Disclaimer: BMT WBM endeavours to ensure that the information provided in this map is accurate and reliable. However, BMT WBM does not warrant, represent or make any representation regarding the currency and accuracy of information contained in this map.

Filepath: S20012Drainage\NOR\AppendixA_Figures\FigureA19_010YR_Velocity.wor

BMT WBM
 www.bmtwbm.com.au

DISCLAIMER:
 BUILDINGS HAVE NOT BEEN MODELLED AND RESULTS CAN'T BE USED TO DETERMINE INTERNAL BUILDING FLOODING.
 INUNDATION PATTERNS FROM LOCAL OVERLAND FLOW MAY VARY SLIGHTLY TO THE MAPPED RESULTS SHOWN.
 COUNCIL SHOULD BE CONSULTED TO CONFIRM FLOOD AFFECTATION AT INDIVIDUAL ALLOTMENTS.



Title: Peak Flood Velocity
5% AEP (20 yr ARI)

Figure: A-20

Rev: -

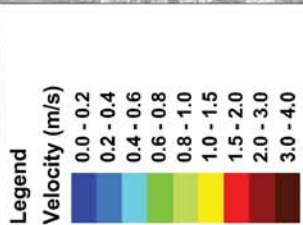
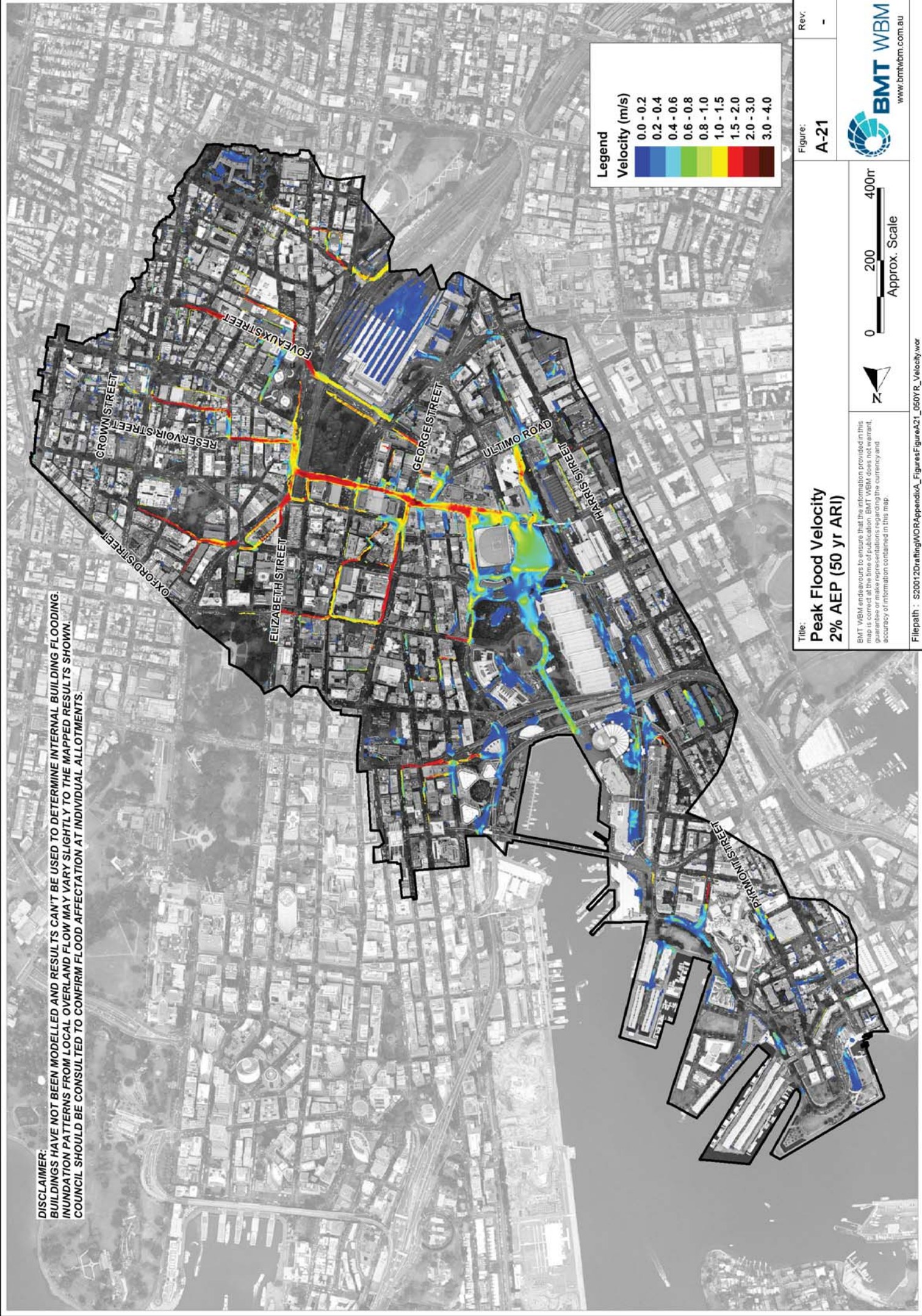
BMT WBM endeavours to ensure that the information provided in this map is accurate and that the information does not warrant, accuracy of information contained in this map.

0 200 400m
 Approx. Scale

BMT WBM
 www.bmtwbm.com.au

Filepath : S20012DraIn(NOR)AppendixA_FiguresFigureA20_020YR_Velocity.wor

DISCLAIMER:
 BUILDINGS HAVE NOT BEEN MODELLED AND RESULTS CAN'T BE USED TO DETERMINE INTERNAL BUILDING FLOODING.
 INUNDATION PATTERNS FROM LOCAL OVERLAND FLOW MAY VARY SLIGHTLY TO THE MAPPED RESULTS SHOWN.
 COUNCIL SHOULD BE CONSULTED TO CONFIRM FLOOD AFFECTATION AT INDIVIDUAL ALLOTMENTS.



Title:
Peak Flood Velocity
2% AEP (50 yr ARI)

Figure:
A-21

Rev:
 -

Scale:
 0 200 400m
 Approx. Scale

Disclaimer:
 BMT WBM endeavours to ensure that the information provided in this map is accurate and reliable. However, BMT WBM does not warrant, represent or accept any liability for the currency and accuracy of information contained in this map.

Filepath: S20012Drainage\NOA\AppendixA_Figures\FigureA21_050YR_Velocity.wor

BMT WBM
 www.bmtwbm.com.au

DISCLAIMER:
 BUILDINGS HAVE NOT BEEN MODELLED AND RESULTS CAN'T BE USED TO DETERMINE INTERNAL BUILDING FLOODING.
 INUNDATION PATTERNS FROM LOCAL OVERLAND FLOW MAY VARY SLIGHTLY TO THE MAPPED RESULTS SHOWN.
 COUNCIL SHOULD BE CONSULTED TO CONFIRM FLOOD AFFECTATION AT INDIVIDUAL ALLOTMENTS.

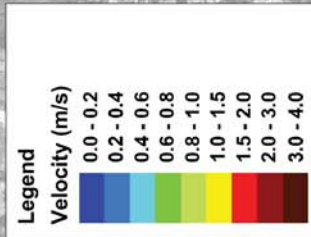
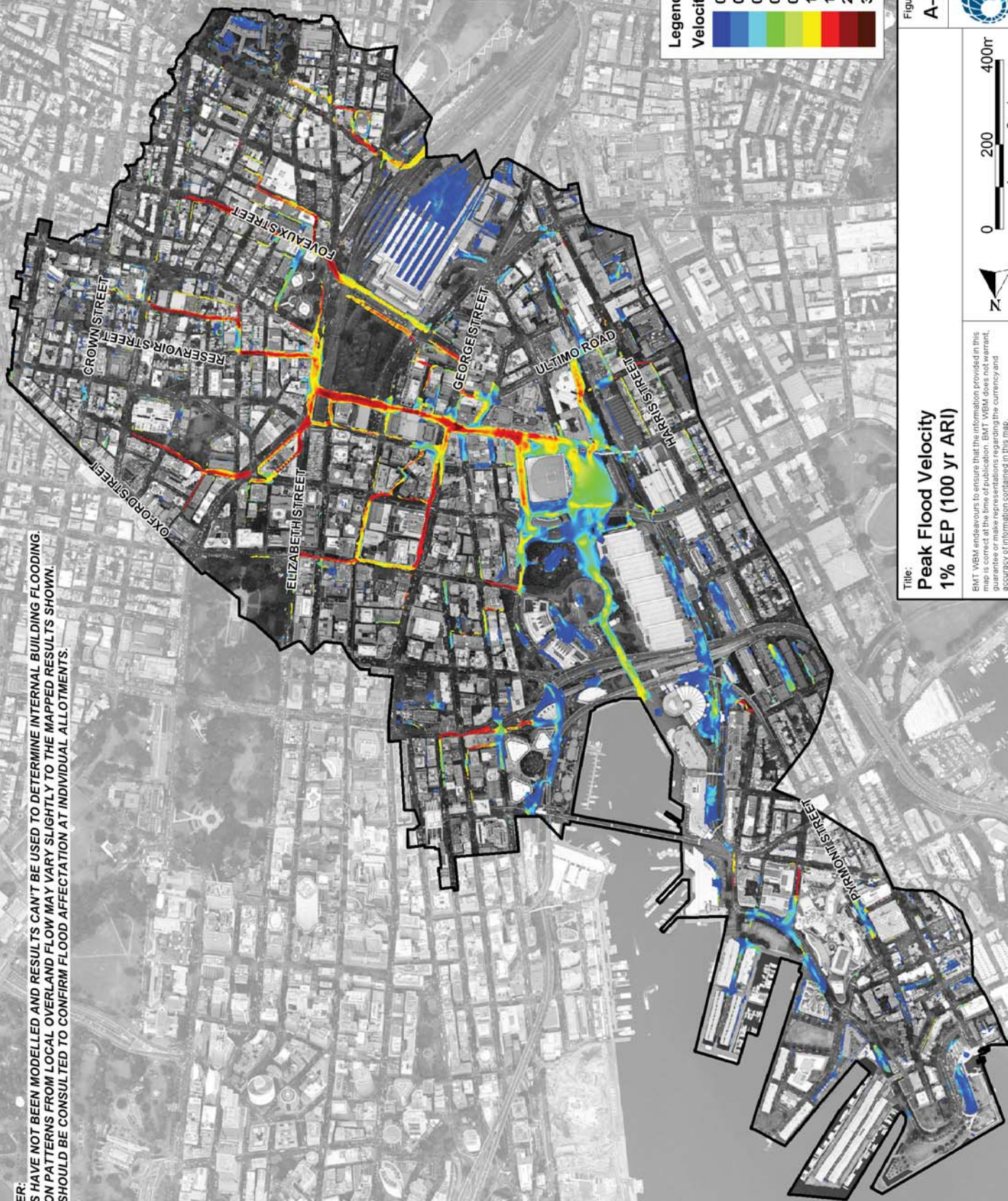


Figure: A-22

Rev: -

**Peak Flood Velocity
 1% AEP (100 yr ARI)**

BMT WBM endeavours to ensure that the information provided in this map is accurate and reliable. However, BMT WBM does not warrant, guarantee or accept any liability for the currency and accuracy of information contained in this map.

Scale: 0 200 400m
 Approx. Scale

Filepath: S:\2001\2Dra\In\NOA\AppendixA_Figures\FigureA22_100YR_Velocity.wor

BMT WBM
 www.bmtwbm.com.au

DISCLAIMER:
 BUILDINGS HAVE NOT BEEN MODELLED AND RESULTS CAN'T BE USED TO DETERMINE INTERNAL BUILDING FLOODING.
 INUNDATION PATTERNS FROM LOCAL OVERLAND FLOW MAY VARY SLIGHTLY TO THE MAPPED RESULTS SHOWN.
 COUNCIL SHOULD BE CONSULTED TO CONFIRM FLOOD AFFECTATION AT INDIVIDUAL ALLOTMENTS.

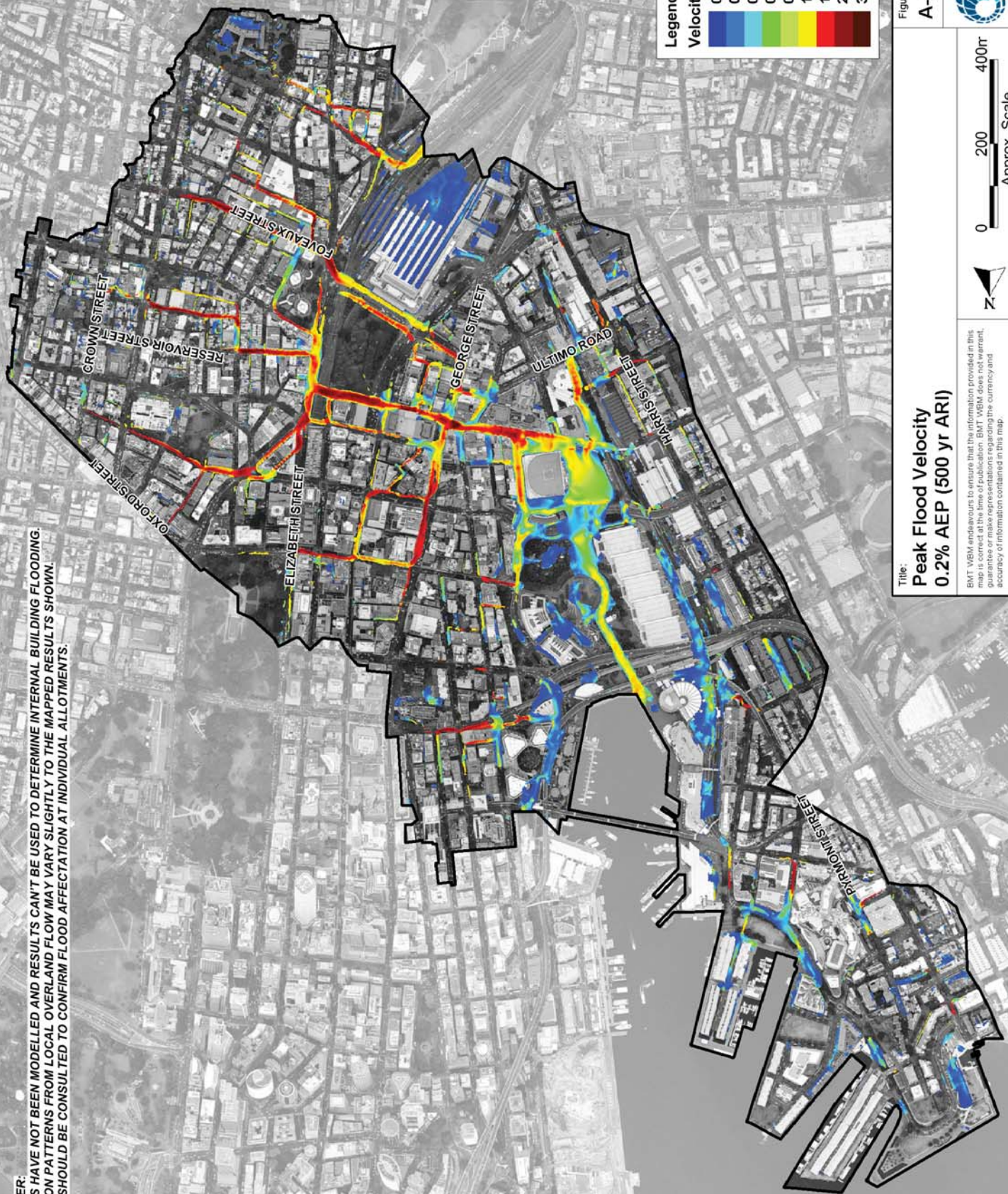


Figure: A-23

Rev: -

Title:
Peak Flood Velocity
0.2% AEP (500 yr ARI)

BMT WBM endeavours to ensure that the information provided in this map is accurate and reliable. However, BMT WBM does not warrant, represent or accept any liability for the currency and accuracy of information contained in this map.

Scale: 0 200 400m
 Approx. Scale

Filepath: S:\2001\2Dra\In\NOA\AppendixA_Figures\FigureA23_500YR_Velocity.wor

BMT WBM
 www.bmtwbm.com.au

DISCLAIMER:
 BUILDINGS HAVE NOT BEEN MODELLED AND RESULTS CAN'T BE USED TO DETERMINE INTERNAL BUILDING FLOODING.
 INUNDATION PATTERNS FROM LOCAL OVERLAND FLOW MAY VARY SLIGHTLY TO THE MAPPED RESULTS SHOWN.
 COUNCIL SHOULD BE CONSULTED TO CONFIRM FLOOD AFFECTATION AT INDIVIDUAL ALLOTMENTS.

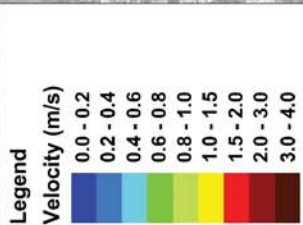
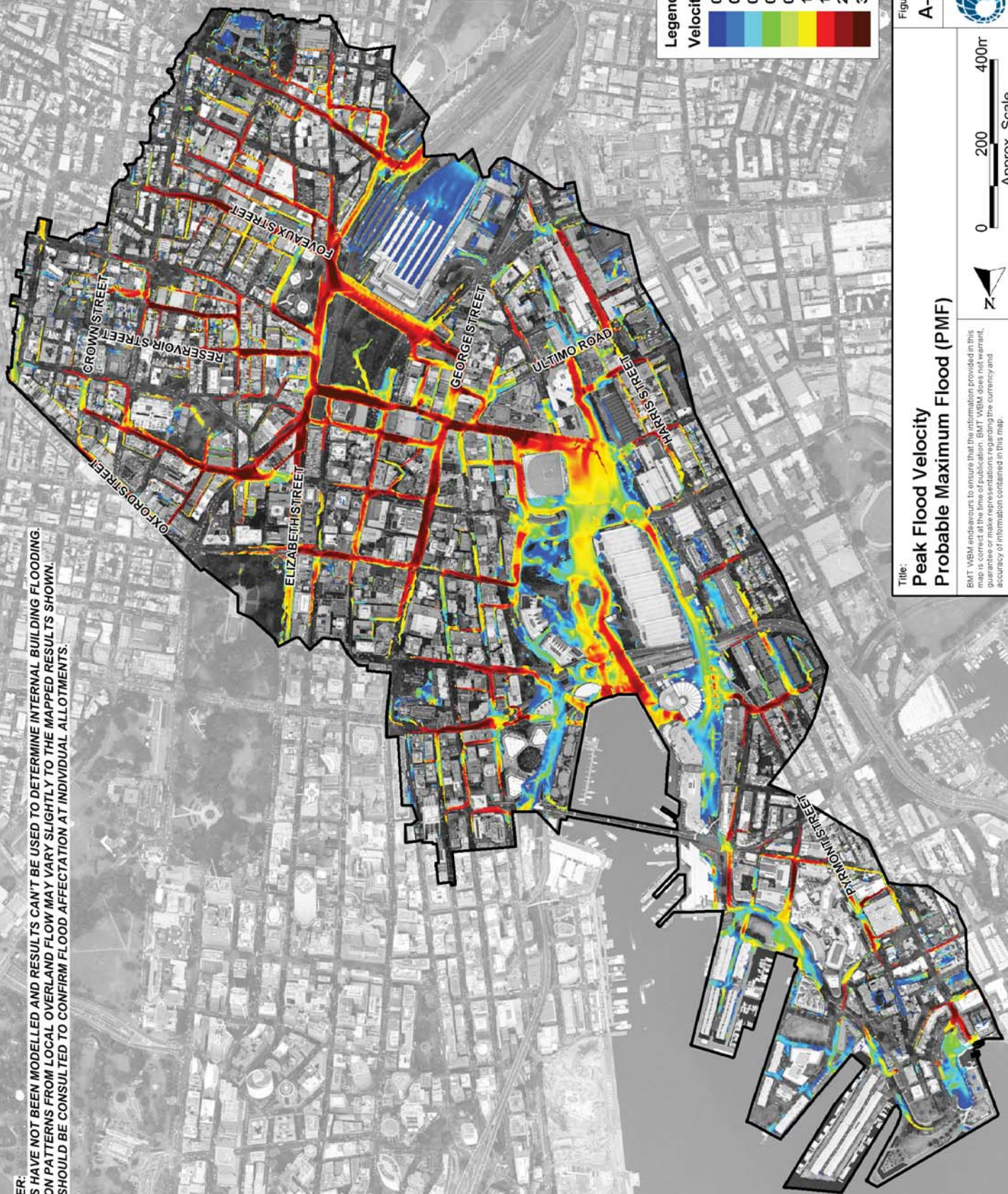


Figure: A-24

Rev: -

**Peak Flood Velocity
 Probable Maximum Flood (PMF)**

BMT WBM endeavours to ensure that the information provided in this map is accurate and reliable. However, BMT WBM does not warrant, represent or assume any liability for the currency and accuracy of information contained in this map.

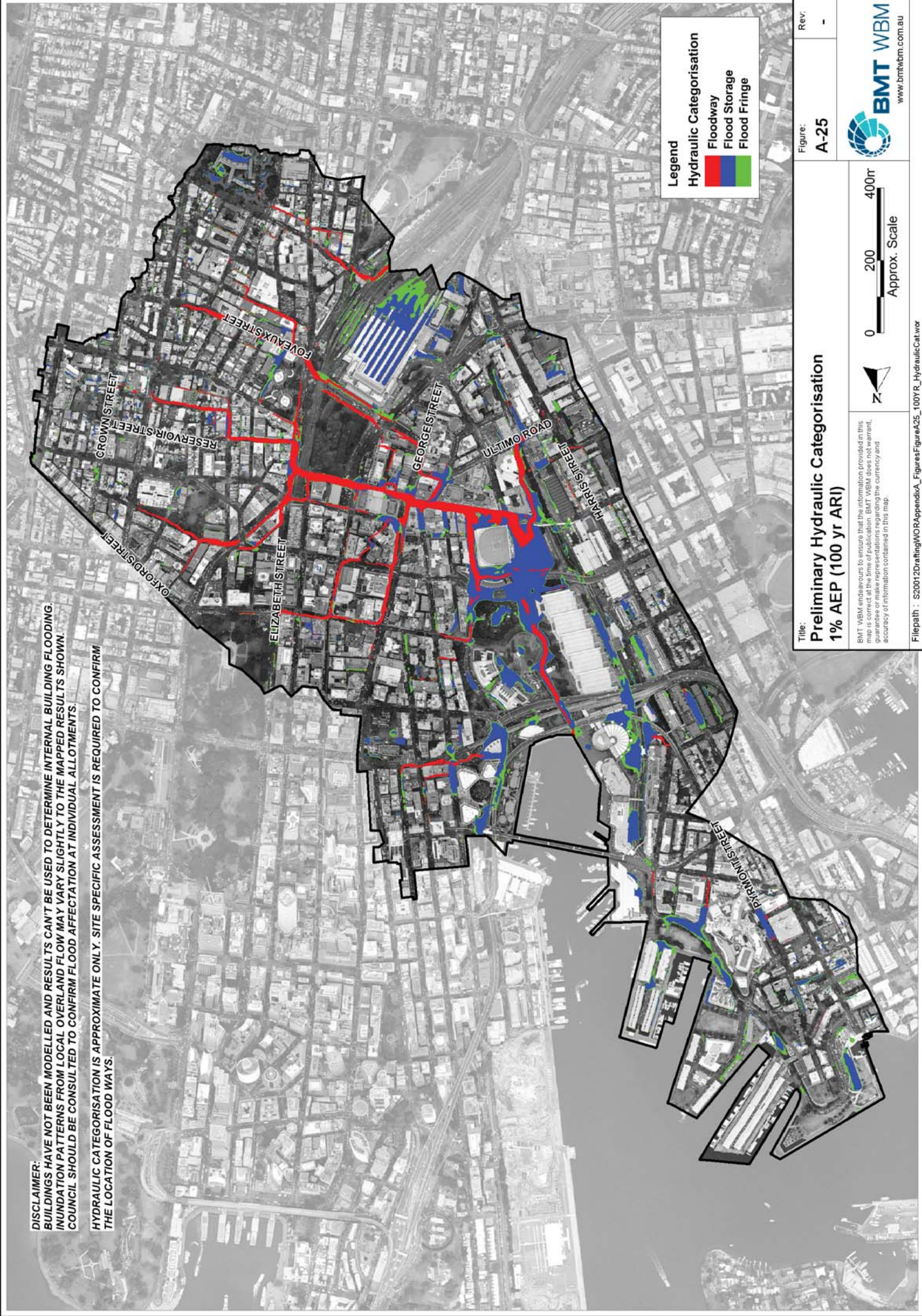
Scale: 0 200 400m
 Approx. Scale

Filepath: S20012DraIn(NOR)AppendixA_FiguresFigureA24_PMF_Velocity.wor

BMT WBM
 www.bmtwbm.com.au

DISCLAIMER:
 BUILDINGS HAVE NOT BEEN MODELLED AND RESULTS CAN'T BE USED TO DETERMINE INTERNAL BUILDING FLOODING.
 INUNDATION PATTERNS FROM LOCAL OVERLAND FLOW MAY VARY SLIGHTLY TO THE MAPPED RESULTS SHOWN.
 COUNCIL SHOULD BE CONSULTED TO CONFIRM FLOOD AFFECTATION AT INDIVIDUAL ALLOTMENTS.




HYDRAULIC CATEGORISATION IS APPROXIMATE ONLY. SITE SPECIFIC ASSESSMENT IS REQUIRED TO CONFIRM
 THE LOCATION OF FLOOD WAYS.



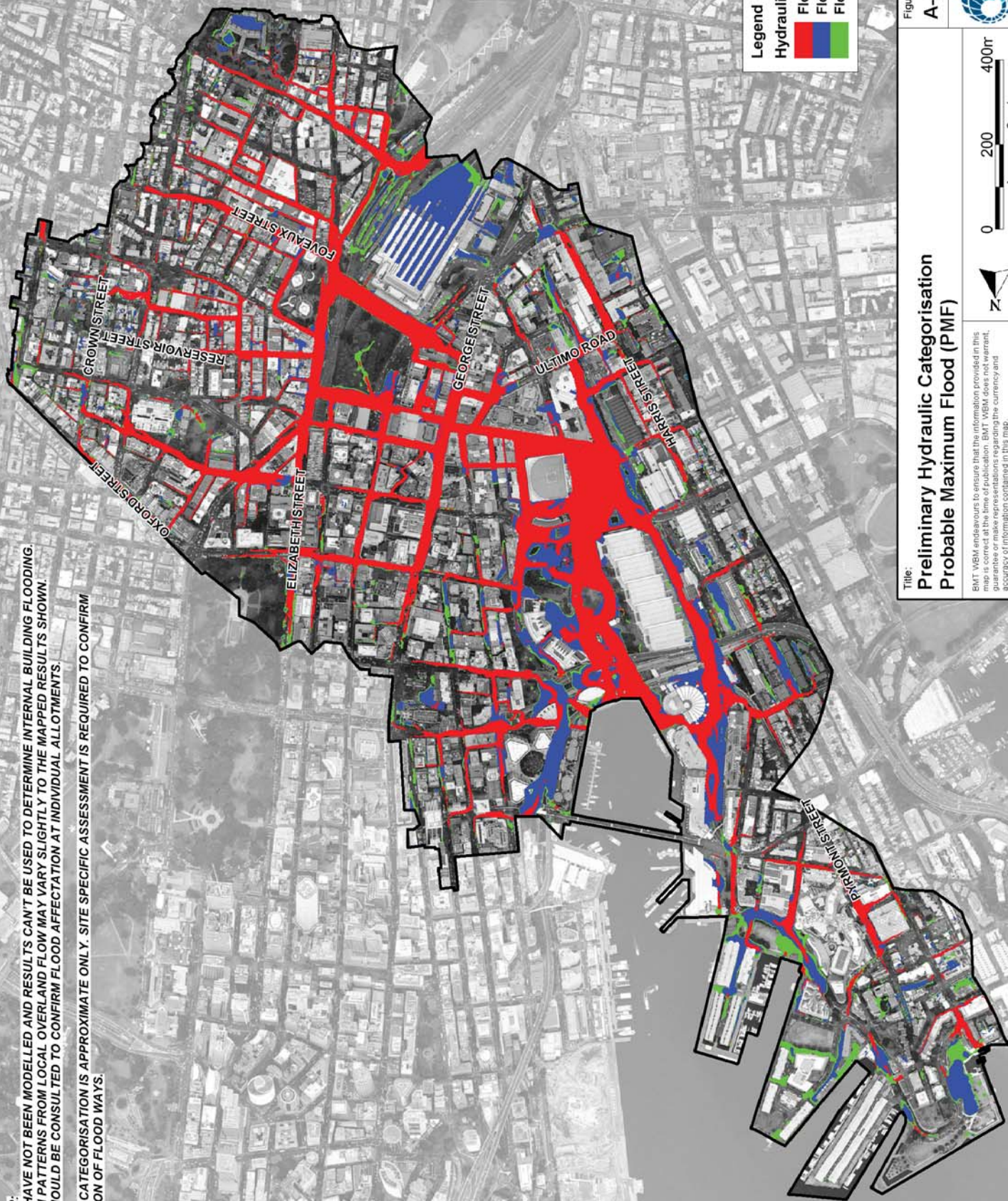
Legend

Hydraulic Categorisation

- █ Floodway
- █ Flood Storage
- █ Flood Fringe

Figure:	A-25	Rev:	-
Title: Preliminary Hydraulic Categorisation 1% AEP (100 yr ARI)		  Approx. Scale	
<small>BMT WBM endeavours to ensure that the information provided in this map and any associated documents does not warrant, represent or guarantee the accuracy and reliability of the information contained in this map.</small>			
<small>Filepath : S20012Drainage\NORAppendixA_Figures\FigureA25_100YR_HydraulicCategor</small>			
 BMT WBM <small>www.bmtwbm.com.au</small>			

DISCLAIMER:
 BUILDINGS HAVE NOT BEEN MODELLED AND RESULTS CAN'T BE USED TO DETERMINE INTERNAL BUILDING FLOODING.
 INUNDATION PATTERNS FROM LOCAL OVERLAND FLOW MAY VARY SLIGHTLY TO THE MAPPED RESULTS SHOWN.
 COUNCIL SHOULD BE CONSULTED TO CONFIRM FLOOD AFFECTATION AT INDIVIDUAL ALLOTMENTS.
 HYDRAULIC CATEGORISATION IS APPROXIMATE ONLY. SITE SPECIFIC ASSESSMENT IS REQUIRED TO CONFIRM
 THE LOCATION OF FLOOD WAYS.



Legend
 Hydraulic Categorisation
 Floodway
 Flood Storage
 Flood Fringe

Figure: A-26
 Rev: -

Title:
 Preliminary Hydraulic Categorisation
 Probable Maximum Flood (PMF)

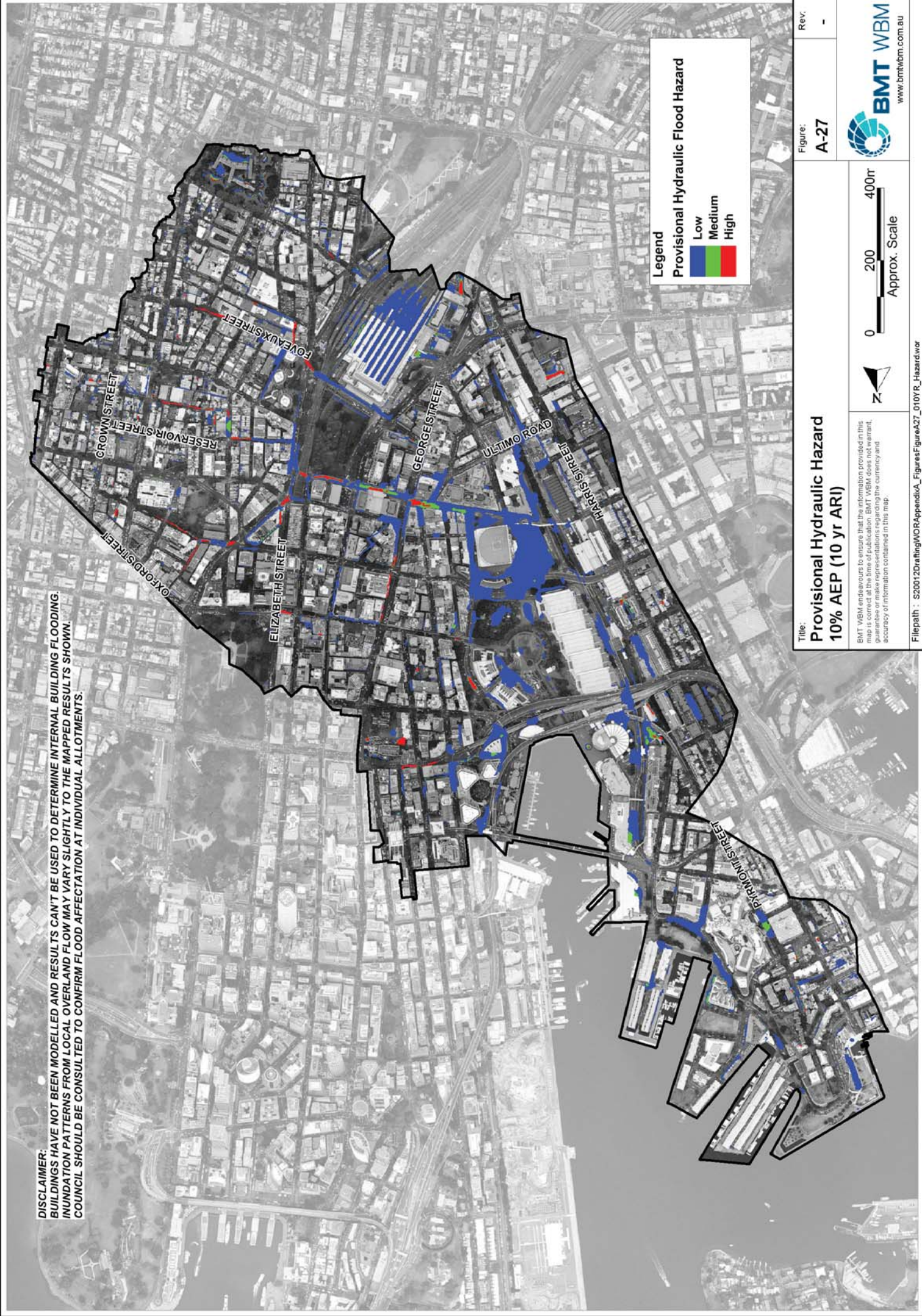
BMT WBM endeavours to ensure that the information provided in this map and any associated documents does not mislead, misrepresent, or otherwise cause any person to act in a way that is not in their best interests. The accuracy of information contained in this map.

0 200 400m
 Approx. Scale

BMT WBM
 www.bmtwbm.com.au

Filepath: S20012Drainage\NOA\AppendixA_Figures\FigureA26_PMF_HydraulicCat.wor

DISCLAIMER:
 BUILDINGS HAVE NOT BEEN MODELLED AND RESULTS CAN'T BE USED TO DETERMINE INTERNAL BUILDING FLOODING.
 INUNDATION PATTERNS FROM LOCAL OVERLAND FLOW MAY VARY SLIGHTLY TO THE MAPPED RESULTS SHOWN.
 COUNCIL SHOULD BE CONSULTED TO CONFIRM FLOOD AFFECTATION AT INDIVIDUAL ALLOTMENTS.



Legend
 Provisional Hydraulic Flood Hazard

Low	Medium	High
Blue	Green	Red



Title: Provisional Hydraulic Hazard
 10% AEP (10 yr ARI)

Figure: A-27

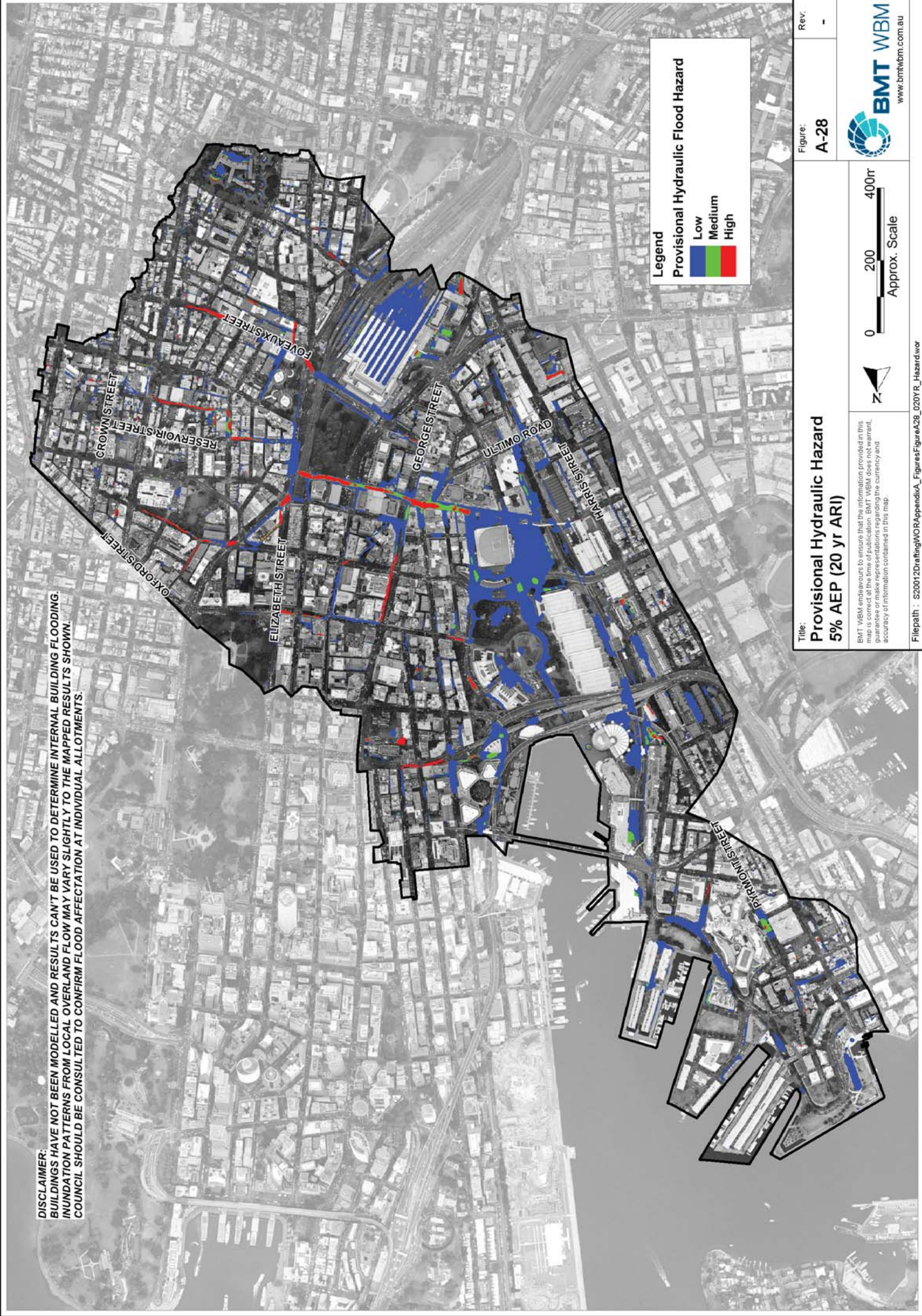
Rev.: -



BMT WBM endeavours to ensure that the information provided in this map is accurate and up to date. BMT WBM does not warrant, guarantee or accept any liability for the currency and accuracy of information contained in this map.

Filepath : S20012DraIng\NOR\AppendixA_Figures\FigureA27_010YR_Hazard.vwr

DISCLAIMER:
 BUILDINGS HAVE NOT BEEN MODELLED AND RESULTS CAN'T BE USED TO DETERMINE INTERNAL BUILDING FLOODING.
 INUNDATION PATTERNS FROM LOCAL OVERLAND FLOW MAY VARY SLIGHTLY TO THE MAPPED RESULTS SHOWN.
 COUNCIL SHOULD BE CONSULTED TO CONFIRM FLOOD AFFECTATION AT INDIVIDUAL ALLOTMENTS.



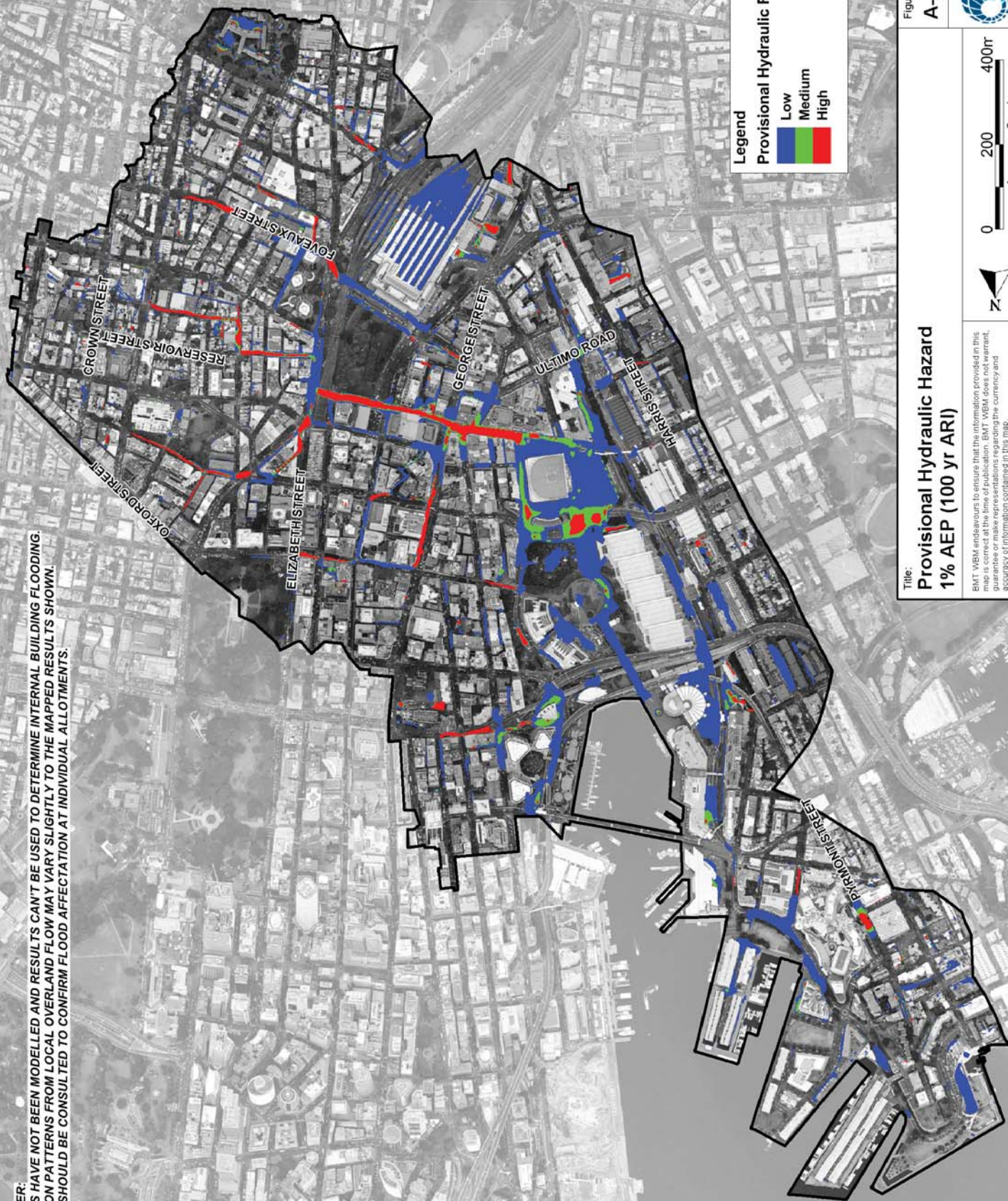
Legend
 Provisional Hydraulic Flood Hazard

Low	Blue
Medium	Green
High	Red



Figure:	A-28	Rev:	-
Title: Provisional Hydraulic Hazard 5% AEP (20 yr ARI)		<small>BMT WBM endeavours to ensure that the information provided in this map is accurate and up to date. BMT WBM does not warrant, guarantee or accept any liability for the currency and accuracy of information contained in this map.</small>	
<small>Filepath : S20012DraInflWORAppendixA_FiguresFigureA28_020YR_Hazard.rvt</small>		 <small>www.bmtwbm.com.au</small>	

DISCLAIMER:
 BUILDINGS HAVE NOT BEEN MODELLED AND RESULTS CAN'T BE USED TO DETERMINE INTERNAL BUILDING FLOODING.
 INUNDATION PATTERNS FROM LOCAL OVERLAND FLOW MAY VARY SLIGHTLY TO THE MAPPED RESULTS SHOWN.
 COUNCIL SHOULD BE CONSULTED TO CONFIRM FLOOD AFFECTATION AT INDIVIDUAL ALLOTMENTS.



Legend
 Provisional Hydraulic Flood Hazard

Low	Medium	High
Blue	Green	Red

Title:
 Provisional Hydraulic Hazard
 1% AEP (100 yr ARI)

Figure:
 A-29

Rev.:
 -

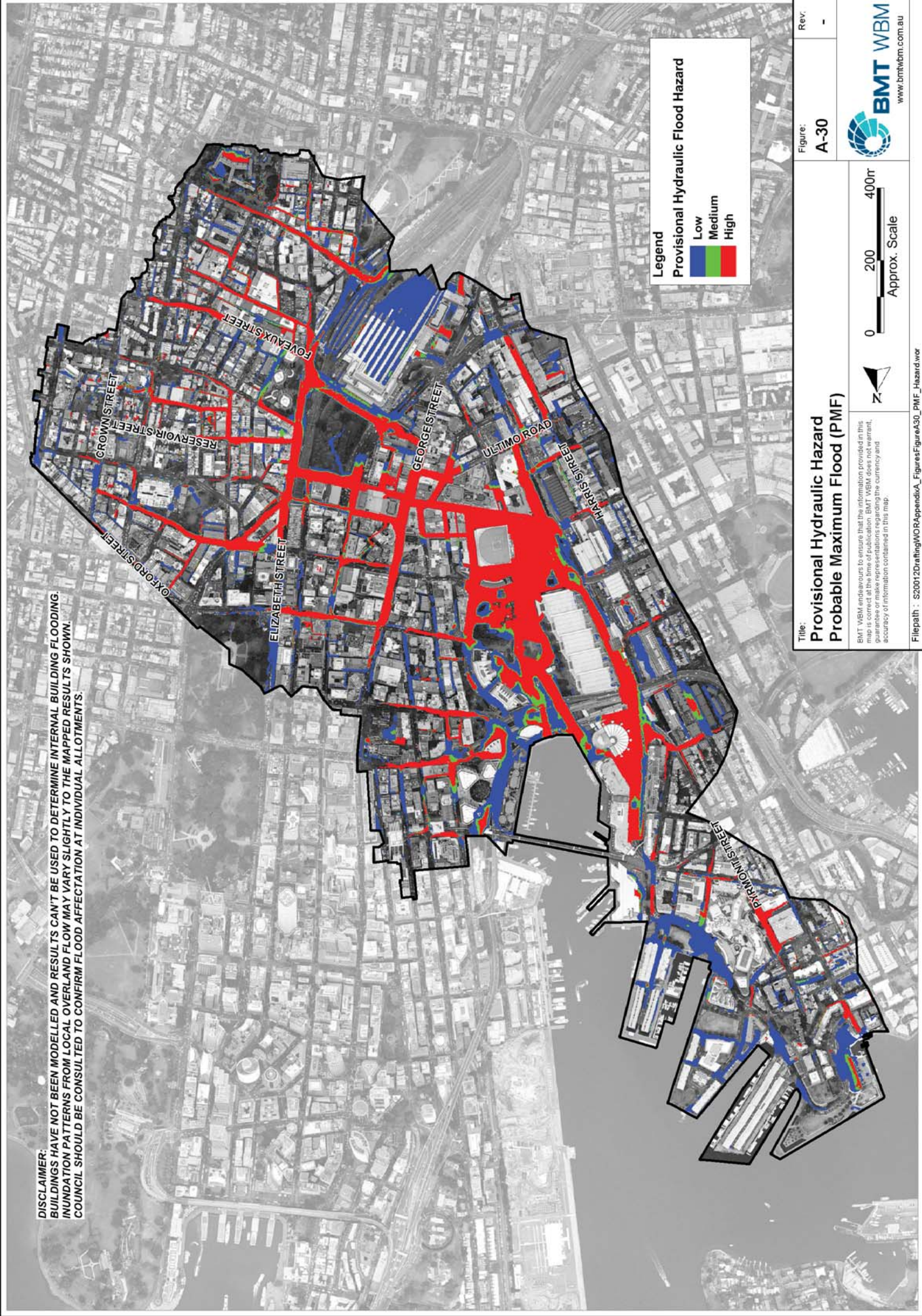
BMT WBM endeavours to ensure that the information provided in this map is accurate and up to date. BMT WBM does not warrant, guarantee or accept any liability for the currency and accuracy of information contained in this map.

0 200 400m
 Approx. Scale

Filepath : S20012DraIng\NOR\AppendixA_Figures\FigureA29_100YR_Hazard.vwr

BMT WBM
 www.bmtwbm.com.au

DISCLAIMER:
 BUILDINGS HAVE NOT BEEN MODELLED AND RESULTS CAN'T BE USED TO DETERMINE INTERNAL BUILDING FLOODING.
 INUNDATION PATTERNS FROM LOCAL OVERLAND FLOW MAY VARY SLIGHTLY TO THE MAPPED RESULTS SHOWN.
 COUNCIL SHOULD BE CONSULTED TO CONFIRM FLOOD AFFECTATION AT INDIVIDUAL ALLOTMENTS.



Legend
 Provisional Hydraulic Flood Hazard

Low	Blue
Medium	Green
High	Red

Title:
 Provisional Hydraulic Hazard Probable Maximum Flood (PMF)

Figure:
 A-30

Rev.:
 -

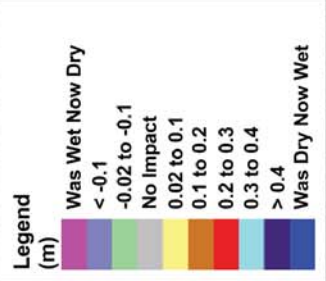
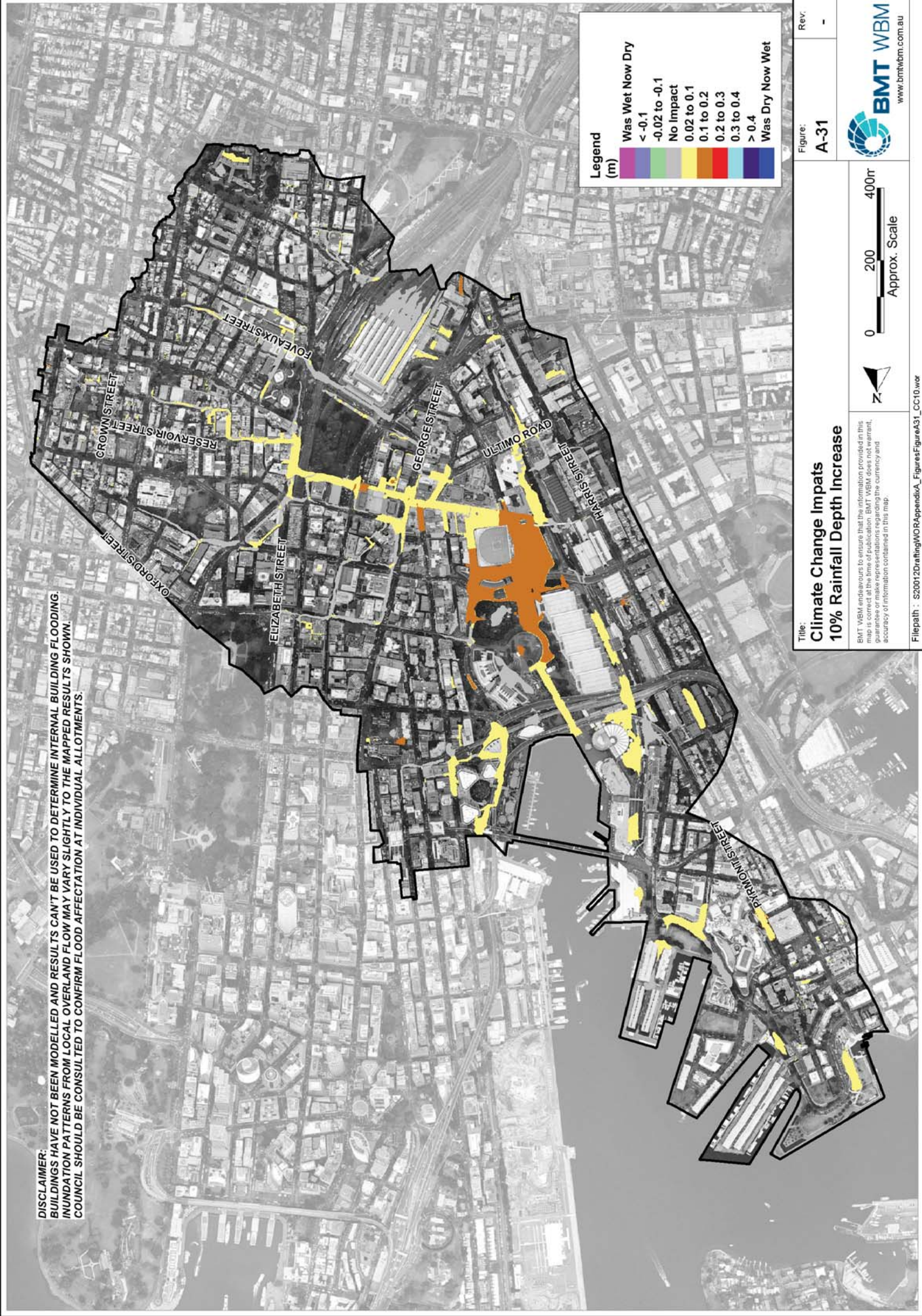
Scale:
 0 200 400m
 Approx. Scale

Disclaimer:
 BMT WBM endeavours to ensure that the information provided in this map is accurate and up to date. BMT WBM does not warrant, represent or make any statements regarding the currency and accuracy of information contained in this map.

Filepath: S20012Draing\W\RA\AppendixA_Figures\FigureA30_PMF_Hazard.wor

BMT WBM
 www.bmtwbm.com.au

DISCLAIMER:
 BUILDINGS HAVE NOT BEEN MODELLED AND RESULTS CAN'T BE USED TO DETERMINE INTERNAL BUILDING FLOODING.
 INUNDATION PATTERNS FROM LOCAL OVERLAND FLOW MAY VARY SLIGHTLY TO THE MAPPED RESULTS SHOWN.
 COUNCIL SHOULD BE CONSULTED TO CONFIRM FLOOD AFFECTATION AT INDIVIDUAL ALLOTMENTS.



Title: Climate Change Impacts
 10% Rainfall Depth Increase

Figure: A-31

Rev.: -

Scale: 0 200 400m
 Approx. Scale

Disclaimer: BMT WBM endeavours to ensure that the information provided in this map and any associated reports or presentations does not warrant, accuracy of information contained in this map.

Filepath: S20012Drainage\NOA\AppendixA_Figures\FigureA31_CC10.wor

BMT WBM
 www.bmtwbm.com.au